

Welcome to Steel Dynamics—Butler Flat Roll Group. To ensure your safety during your visit, please familiarize yourself with this information. Our goal at SDI is to achieve zero incidents. Meeting this goal requires everyone's participation, including visitors.

1. When you arrive, watch the visitor safety video prior to entering the mill.
2. Visitors must be accompanied by a Steel Dynamics employee at all times.
3. **BE ALERT**
 - Look up—whenever entering a new area of the mill, check for cranes and other hazards.
 - Yield to all moving equipment.
 - Watch your footing and use handrails on stairs and elevated walkways.
1. **PPE** (Personal Protective Equipment) must be worn at all times inside the mill. This includes:
 - Hard Hats
 - Closed toe shoes of sturdy construction (preferably leather)
 - Safety Glasses with side shields
 - Hearing Protection
 - Long sleeved shirts or FR mill jacket
 - Long pants or slacks
1. Ask any SDI employee if you need assistance or are unsure that you may enter an area.
2. Smoking is permitted in designated outdoor areas only.
3. Welding flash can cause serious eye injury. **DO NOT** look directly at the welding arc.
4. Report all injuries, property damage, and fluid spills to your guide immediately.

The Butler facility is committed to SDI's commitment to Health, Safety and Environmental care. Our plant has international certified management systems, such as ISO 14001.

Health, Safety and Environmental Care are essential for our long-term success and business leadership. The health and safety of our employees continues to be the first consideration in the operation of our business. Our key commitments are:

- Prevent Injury and Illness
- Prevent Pollution
- Regulatory Compliance
- Continual Improvement

Please Note:

Comprehensive tours of the facility take about 2 hours and involve a lot of walking on concrete surfaces in an industrial environment.

The mill contains high heat areas and areas requiring the climbing and descent of stairs. Individuals with pacemakers **CANNOT** enter certain areas. If you have any medical concerns, let your guide know before starting the tour.

Equipment and processes are considered confidential and subject to confidentiality.

Cameras, audio and video equipment are not allowed in the plant unless pre-approved by your guide.



Butler Environmental, Health and Safety Awareness Visitor Brochure

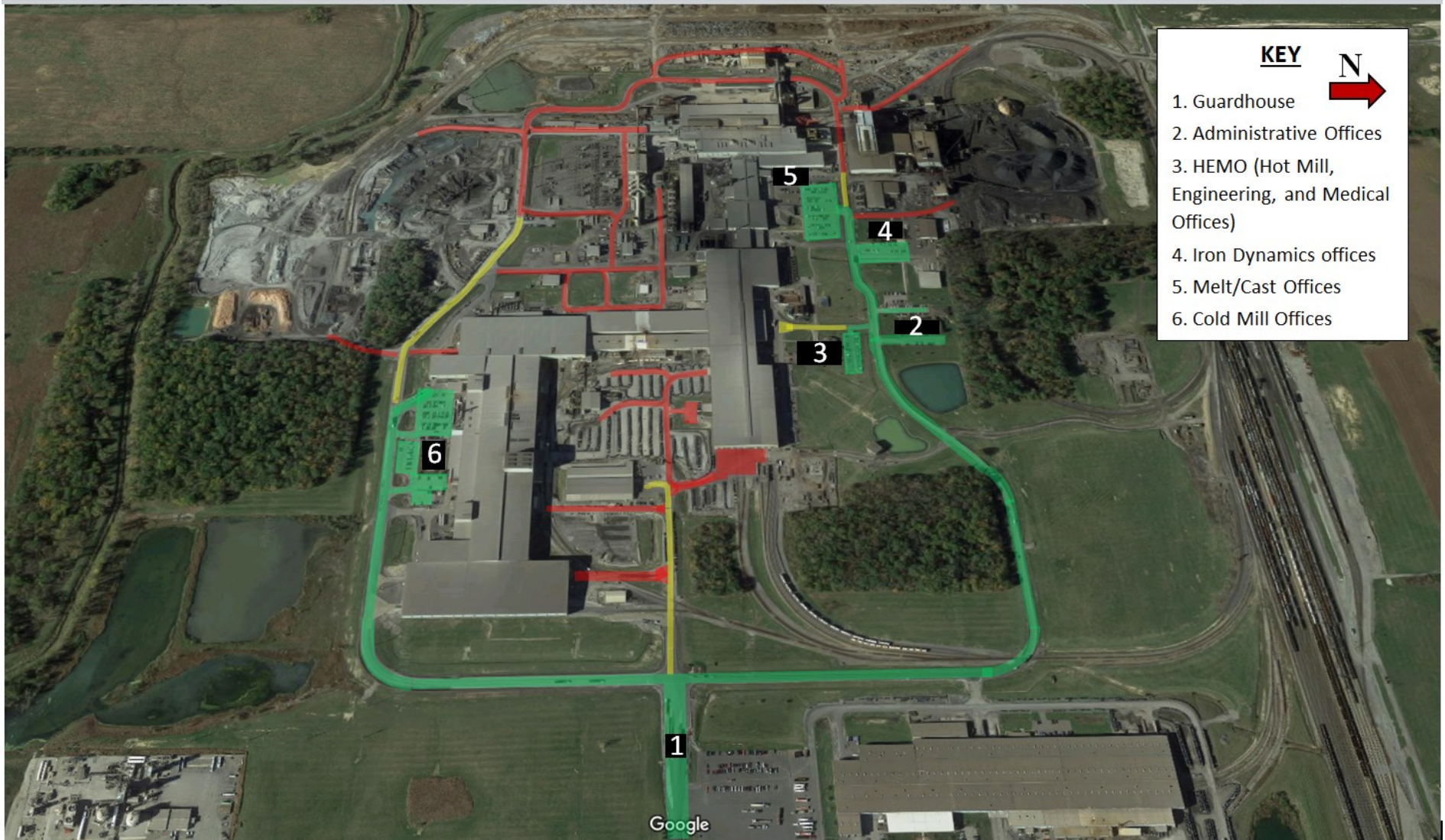
Emergency Contact Information:

From cell phones: 260-868-8000

From on-site phones dial x500

Visitor Access Map

USE OF CELL PHONES IS STRICTLY PROHIBITED WHILE DRIVING OR OPERATING ANY TYPE OF MOBILE EQUIPMENT OR PASSENGER VEHICLE



Visitor Safe Mill Access



Authorized Visitors Only



NO Visitor Access